



**hamlyn
smith.**

Clarendon Road, Hove, BN3 3WX

£1,000 Per month

hamlyn smith.

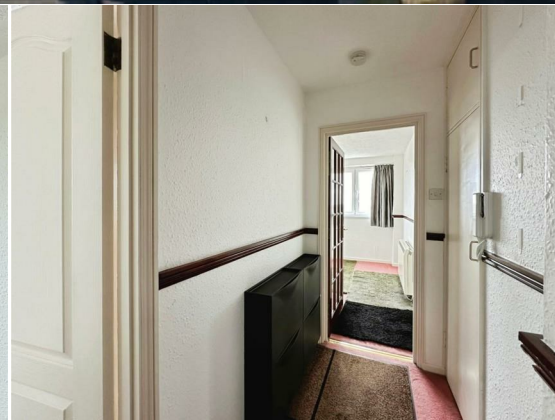
 1 Bedroom

 1 Reception

 1 Bathroom

A one-bedroom apartment situated on the sixth floor of a well-maintained purpose-built block.

- One Bedroom Apartment
- Lounge With Balcony
- South & West Aspect
- Energy Rating - D
- Council Tax Band - A
- Parking Zone - N
- Sixth Floor
- Lift Access
- Unfurnished





hamlyn smith.

📍 50 Goldstone Villas, Hove, BN3 3RS

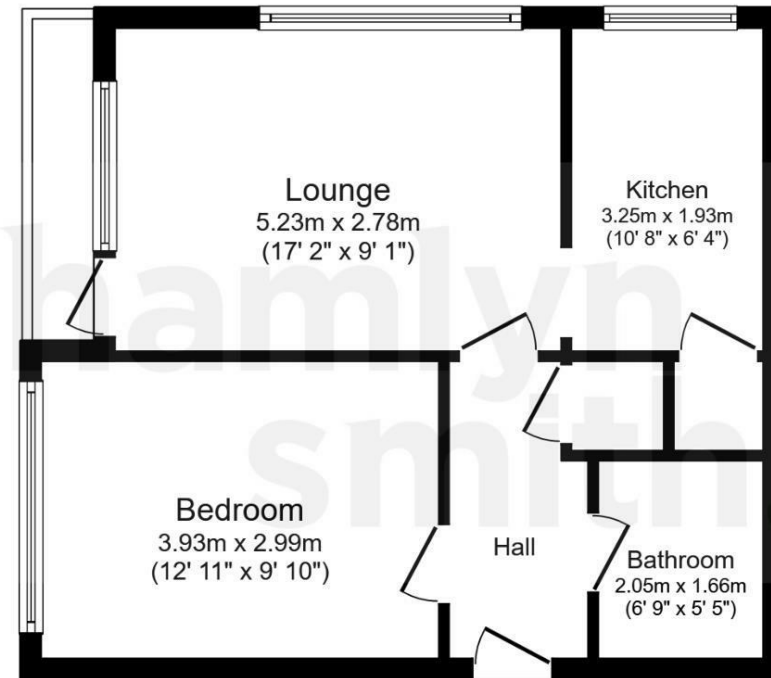
☎ 01273 762222

✉ hello@hamlynsmith.co.uk

Ellen House is perfectly positioned just south of Hove mainline station, making it an excellent choice for commuters heading into London or across Brighton & Hove. Residents will also enjoy easy access to a wide range of local shops, with the vibrant bars, cafés, and restaurants of Church Road just a short stroll away.

Located on the sixth floor—accessible via lift or communal stairs—this one-bedroom apartment offers bright, spacious living with fantastic natural light throughout. The generous dual-aspect lounge faces south and west, boasting sea views and plenty of sunshine from midday onward.

The property also features a well-proportioned kitchen and bathroom, along with a good-sized double bedroom that faces south and comfortably accommodates a double bed. Additional benefits include modern double glazing and built-in storage, adding to the apartment's practicality and potential.



Floor Plan

Floor area 43.6 sq.m. (469 sq.ft.)

Total floor area: 43.6 sq.m. (469 sq.ft.)

This floor plan is for illustrative purposes only. It is not drawn to scale. Any measurements, floor areas (including any total floor area), openings and orientations are approximate. No details are guaranteed, they cannot be relied upon for any purpose and do not form any part of any agreement. No liability is taken for any error, omission or misstatement. A party must rely upon its own inspection(s). Powered by www.Propertybox.io

